

# Target Hardening



USAonwatch.org

***Make your home a  
safer place.***

# Remember to Check:



**Doors Locks**

**Windows Lighting**

**Garages Appearance**



# Doors

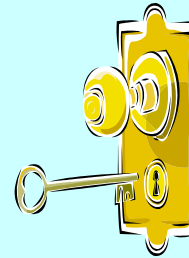
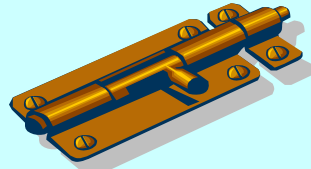
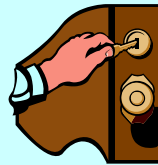
- ☑ Install good quality deadbolt locks on all exterior doors and any doors from attached garages.
- ☑ All exterior doors should be metal or solid wood, and have strong door hinges on the inside of the door with hidden or non-removable pins.
- ☑ Door areas should be well lighted, and doors should have a wide-angle viewer so that you can see who is outside without opening the door.
- ☑ Properly install doorframes on all exterior doors and doors from attached garages so they cannot be spread apart.
- ☑ Install security-type door strikes on all exterior doors.





# Locks

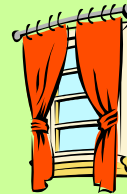
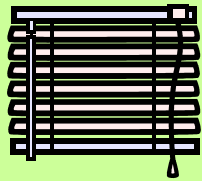
- ☑ Install strong, reliable deadbolt locks that extend at least one inch when in the locked position.
- ☑ Consider double cylinder deadbolts (keyed inside and outside) or deadbolts with reinforced strike plates and extra long mounting screws to anchor the lock.
- ☑ Install good quality deadbolt locks on all exterior doors and any doors from attached garages.





# Windows

- ☑ Window locks or bars may be used to increase security, especially on all windows that are accessible from the ground.
- ☑ Use window coverings such as curtains or mini-blinds to decrease visibility into your home.





# Lighting

- ☑ Use automatic timers all of the time, not just when you are away.
- ☑ Utilize specialty lighting in high security areas.
- ☑ Install around doors, porches, windows, garage and all points of entry.
- ☑ Consider motion detectors.
- ☑ Illuminate house and grounds.
- ☑ Increase visibility and eliminate hiding places.





# Appearance

- ☑ Direct visitors by means of fences, walkways and shrubs.
- ☑ Plant thorny bushes around windows to make illegal entry more difficult.
- ☑ Trim shrubs and trees that could conceal criminals.
- ☑ Cut back tree limbs that might allow thieves to climb into windows.
- ☑ Use landscaping to provide maximum visibility to and from the house.





# Garages

- ☑ Always lock the house door from an attached garage.
- ☑ When at home, always park your cars in the garage with the garage door shut.
- ☑ Install automatic openers that will allow you to stay in your car until safely parked in the garage.







# General

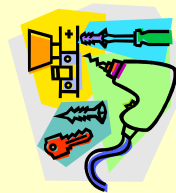
- ☑ When you're not at home, make it look as though somebody's there.
- ☑ Never let people know when your home will be empty.
- ☑ Avoid advertising your expensive purchases.
- ☑ Don't let burglars use your spare key.





# General

- ☑ Make a list of your property.
- ☑ Lock up your tools and your shed.
- ☑ Consider getting a four-legged "burglar alarm."





**BJA** Bureau of Justice Assistance  
Office of Justice Programs • U.S. Department of Justice